



REGIS PROFILE

2025-2026

55 East 84th Street, New York, NY 10028
T: 212-288-1100 | F: 212-794-1221
regis.org | CEEB/ACT Code: 333905

History

Regis is a tuition-free, Catholic, Jesuit high school located in Manhattan. The school opened in 1914 thanks to the generous financial support of Julia Grant, the Foundress, and her family. The legacy of the founding family was to provide a Catholic education for boys who could not afford it. Today, Regis continues to flourish thanks to the generosity of its alumni and parents.

Jesuit Mission

Regis High School offers a rigorous liberal arts curriculum grounded in *cura personalis*, meaning care for and development of the whole person. Regis prepares young men to be open to growth, intellectually proficient, and committed to justice. Graduates of Regis aspire to finding God in all things through professional accomplishment, leadership, and service to others.

Highly Selective Admission

Applicants complete the High School Placement Test (HSPT) and must score in the top 10 percent of nationwide students to be competitive for admission. Additionally, students must be Catholic and demonstrate desire for Catholic education. Admission is based upon past performance, academic promise, personal qualities, community engagement, and the need for financial assistance. **The Class of 2026 had 544 applicants, 145 admitted students, and 137 matriculated students.**

Tuition-Free Education

Students pay no tuition to attend Regis High School due to its founding endowment in 1912 and the generous support of alumni, family, and friends. **Regis is the only tuition-free private school in the United States.** This ensures a student body of extraordinary talent and a wide range of socioeconomic backgrounds.

Curriculum and Grading

All students chosen for admission are intellectually gifted. Accordingly, all courses at Regis High School are taught at the honors or college level. **There is no weighting of courses, and class rank is not computed.** A distribution chart of cumulative unweighted grade point averages is provided on the second page of this profile.

Learning Outside of the Classroom

Regis provides numerous opportunities for students to extend their learning beyond the classroom, including 10 international experiences (cultural, language exchanges, service), independent scientific research, history symposiums, and a trimester of service-learning in senior year.

Rev. Christopher Devron, S.J.
President
cdevron@regis.org

Charles Heintz
Principal
cheintz@regis.org

Kellen Howell
Director of College Counseling
khowell@regis.org

Lisa Bustillo
School & College Counselor
lbustillo@regis.org

Christopher Febles
School & College Counselor
cfebles@regis.org

Elena Troy
School & College Counselor
etroy@regis.org

Geographic Distribution

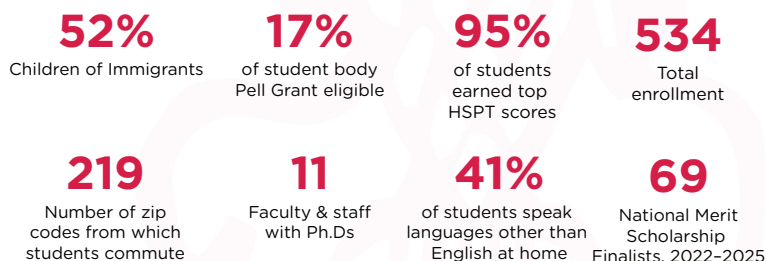


Regis attracts students from more zip codes than any private day school in the United States. With its location in the heart of Manhattan, the average commute time per student is more than one hour each way.

Overview of Student Body

Regis High School is routinely recognized as one of the nation's top 25 private high schools (SAT profile, National Merit Semifinalists, placement of students into the most selective universities). Students are selected solely based on their academic potential as well as a thoughtful interview process that assesses personal talents. As a tuition-free school, Regis has a unique and exceptional socioeconomic diversity. There is no other high school like Regis.

REGIS BY THE NUMBERS



Profile of a Regis Student at Graduation

**Open to Growth, Intellectually Proficient,
Religious, Loving, and Committed to
Doing Justice**



REGIS PROFILE

2025-2026

Standardized Testing Results

SAT 3-Year Middle 50%*

ACT 3-Year Middle 50%

1430-1530

COMPOSITE

32-34

COMPOSITE

***Top 3% of nation**

Course Offerings

English		Theology	
Honors Introduction to Literary Analysis		Honors Introduction to Catholicism	
Honors American Literature		Honors Christian Scriptures	
Honors Close Reading & Critical Writing		Honors Catholic Ethics	
Honors English Seminar		Honors Theology Seminar	
Speech 9		Social Studies	
Fine Arts		Honors World History	
Foundations in Art		Honors US History	
Arts in America		Honors European History	
Language (Chinese, French, Latin, Spanish, or German)		Science	
Honors Language I		Honors Biology	
Honors Language II		Honors Chemistry	
Honors Language III		Honors Physics	
Honors Language IV		Computer Science	
Honors Language V		Computer Science 9	
Mathematics		Computer Science 10	
Honors Geometry		Electives	
Advanced Geometry & Algebra II		Advanced Arts Electives	
Honors Algebra II		Advanced Computer Science Electives	
Honors Pre-Calculus w/ Trigonometry		Honors Math Electives	
Advanced Pre-Calculus w/ Trigonometry		Advanced Science Electives	
Advanced Calculus I		Honors Social Studies Electives	
Honors Calculus I		Independent Studies	
Honors Calculus I & II		Language Research Project	
Advanced Calculus II & Multivariable Calculus		Science Research Project	
Honors Statistics		Student Historian Project	
Honors Linear Algebra (Dual Enrollment)*			
Years Required	4	English, Theology	
	3	Fine Arts, Language, Math, Social Studies, Science	
	2	Computer Science	
Grading Scale	4.0	97-100	High Honors
	3.8	90-96	Honors
	3.5	83-89	Merit
	3.2	75-82	Satisfactory
	2.8	68-74	Unsatisfactory
	2.0	<68	Failure

*Dual Enrollment course (3 college credits) with Stony Brook University.

Class of 2026 Unweighted GPA Distribution 129 Students

Cumulative GPA Grades 9-11	Number of Students	Mean SAT Score
3.85-4.0	33	1530
3.80-3.84	23	1490
3.70-3.79	41	1460
3.60-3.69	16	1450
<3.6	16	1390

Advanced Placement (AP) Performance

74%

Scored 4 or 5

96%

Scored 3 or Higher

While Regis does not offer AP classes, 188 students took more than 317 exams in May 2025.

Class of 2026 National Merit Students

129

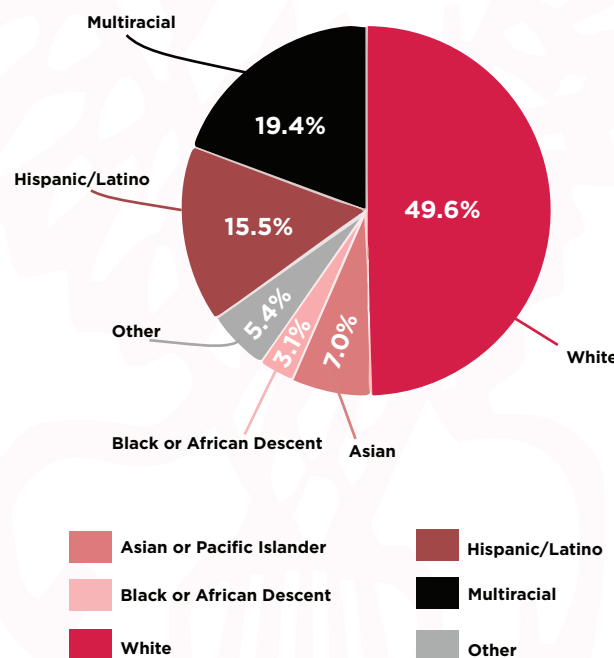
20

49

51

Class Size National Merit Semifinalists National Merit Commended Students Awarded National Recognition

Class of 2026 Race Distribution Chart



Application Limit

Students are permitted to apply to no more than 12 colleges and universities. All schools within the State University of New York (SUNY) system are counted as one application. The same applies to schools in the City University of New York (CUNY) system.



REGIS PROFILE

COLLEGE MATRICULATION

The first column indicates the number of students who matriculated from the Class of 2025, and the second column indicates the number of students who matriculated over the past four years.

Class of 2022-2025 Matriculation

College	Class 4-Yr. of '25 Total	Class 4-Yr. of '25 Total	Class 4-Yr. of '25 Total
Adelphi University	0 1	Hofstra University	1 1
American University	2 2	Holy Cross College	1 1
Arizona State University-Tempe	0 1	Indiana University	1 2
Auburn University	1 1	Johns Hopkins University	1 3
Ave Maria University	1 1	Lafayette College	1 3
Babson College	0 2	Lehigh University	1 2
Bates College	0 1	Loyola Marymount University	0 2
Binghamton University	4 14	Loyola University Chicago	1 1
Boston College	8 28	Loyola University Maryland	2 5
Boston University	2 5	Macalester College	0 1
Brandeis University	1 1	Manhattan University	0 1
Brown University	1 5	Massachusetts Institute of Technology	0 3
Bucknell University	1 2	McGill University	2 2
Butler University	0 1	Middlebury College	1 4
Cal Poly	1 1	Montclair State University	0 1
California Institute of Technology	1 2	New York University	1 6
Carleton College	1 1	Northeastern University	2 6
Carnegie Mellon University	1 5	Northwestern University	1 5
Case Western Reserve University	1 5	Pace University-Westchester Campus	1 1
Colgate University	0 2	Pennsylvania State University-Main Campus	1 4
College of the Holy Cross	2 13	Pomona College	1 1
Colorado School of Mines	1 1	Princeton University	2 12
Columbia University	9 16	Purdue University-Main Campus	2 7
Cornell University	6 24	Reed College	0 1
CUNY Brooklyn College	0 1	Rensselaer Polytechnic Institute	3 13
CUNY City College	1 4	Rice University	2 5
CUNY Hunter College	0 1	Rochester Institute of Technology	1 3
CUNY Macaulay Honors College	0 3	Rutgers University-New Brunswick	2 3
Dartmouth College	0 2	Santa Clara University	1 2
Davidson College	0 1	St. John's University	2 7
Duke University	3 6	Stanford University	1 1
Emory University	1 8	Stevens Institute of Technology	1 4
Fairfield University	3 11	Stony Brook University	2 8
Florida State University	1 1	Syracuse University	3 3
Fordham University	6 18	The American University of Paris	0 1
Georgetown University	11 38	The Catholic University of America	1 1
Hamilton College	1 1	The George Washington University	1 2
Harvard University	1 6	The Sophie Davis School	0 1
Harvey Mudd College	1 1	The University of Alabama	0 5
Haverford College	1 1	The University of Texas at Austin	1 5
		Thomas Aquinas College-Northfield	0 1
		Tufts University	1 4
		United States Air Force Academy	0 1
		United States Military Academy	1 3
		United States Naval Academy	0 3
		Universita Bocconi	1 1
		University of California-Berkeley	1 1
		University of Central Florida	1 1
		University of Chicago	1 10
		University of Colorado Boulder	1 2
		University of Connecticut	1 2
		University of Dallas	1 1
		University of Florida	1 2
		University of Maryland-College Park	1 2
		University of Miami	0 2
		University of Michigan-Ann Arbor	1 3
		University of New Haven	2 1
		University of North Carolina at Chapel Hill	1 2
		University of Notre Dame	9 24
		University of Pennsylvania	2 12
		University of Richmond	0 1
		University of Rochester	1 3
		University of Scranton	1 4
		University of South Carolina-Columbia	1 1
		University of Southern California	0 2
		University of St. Andrews	0 1
		University of Utah	1 1
		University of Vermont	0 1
		University of Virginia-Main Campus	2 5
		University of Wisconsin-Madison	1 2
		Vanderbilt University	1 2
		Vassar College	0 2
		Villanova University	5 7
		Virginia Tech	1 4
		Washington University in St. Louis	0 2
		Wesleyan University	2 4
		William & Mary	0 1
		Williams College	1 12
		Worcester Polytechnic Institute	1 2
		Xavier University	1 2
		Yale University	2 7